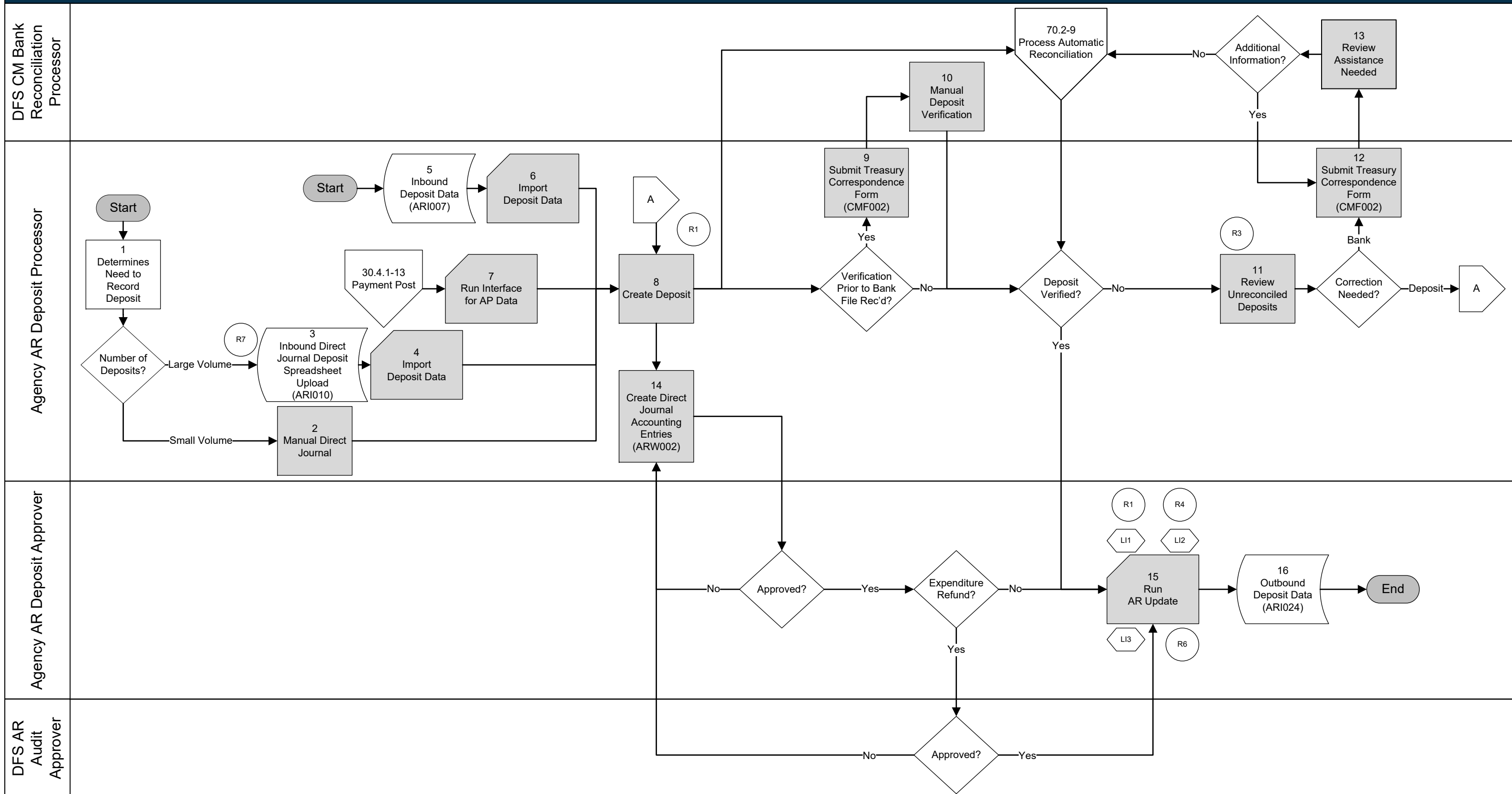
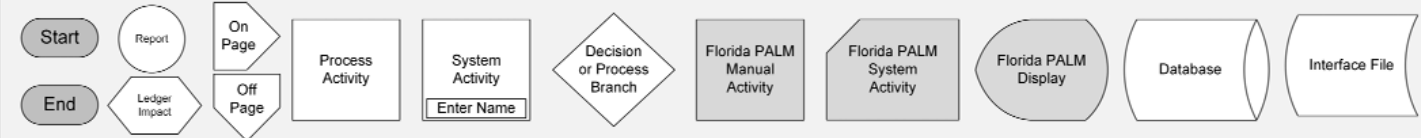
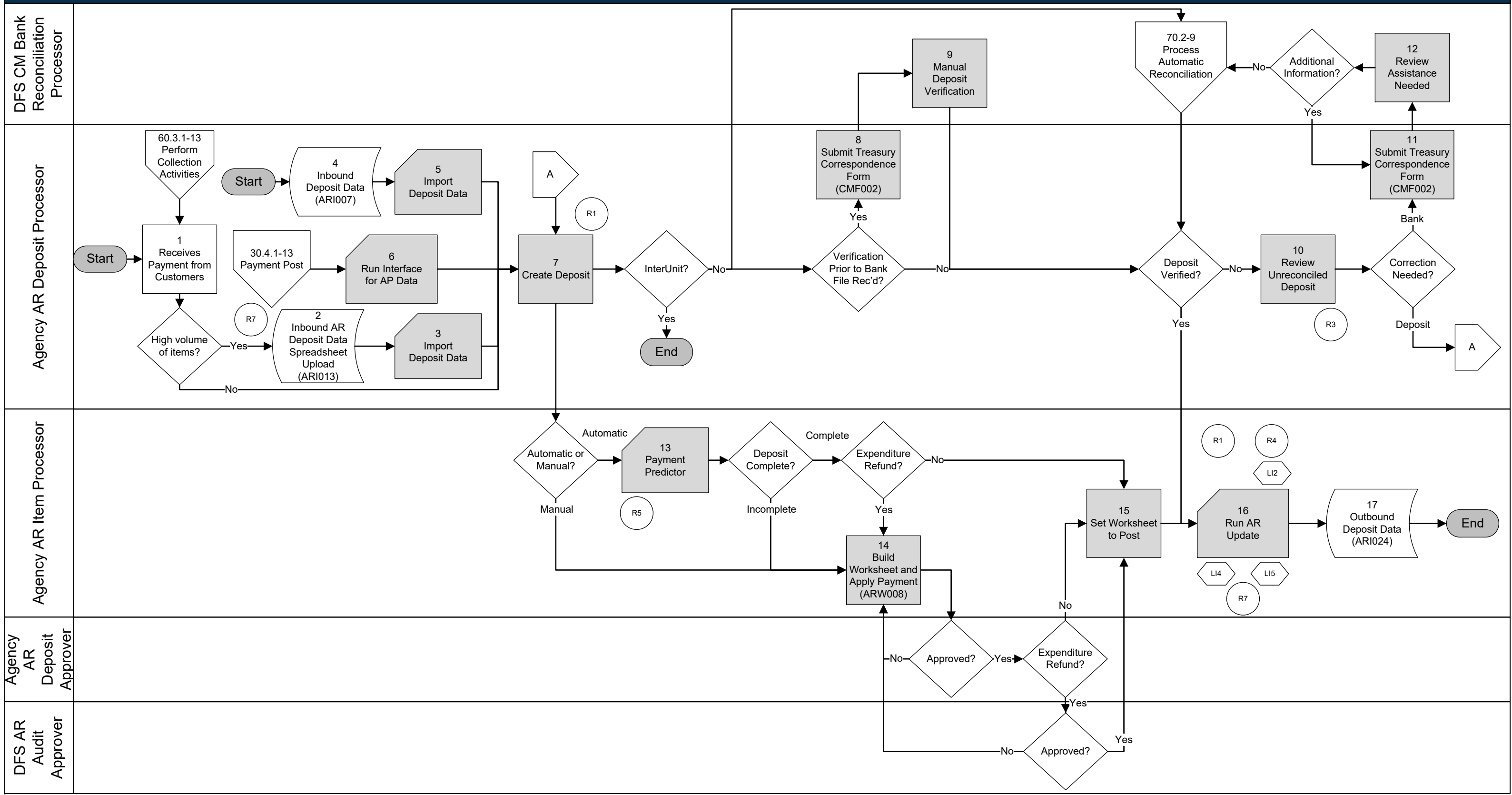


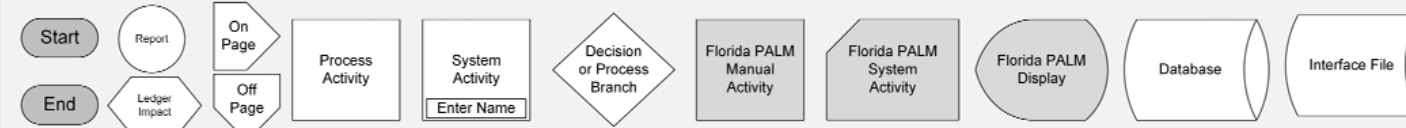
Accounts Receivable Module





Accounts Receivable Module



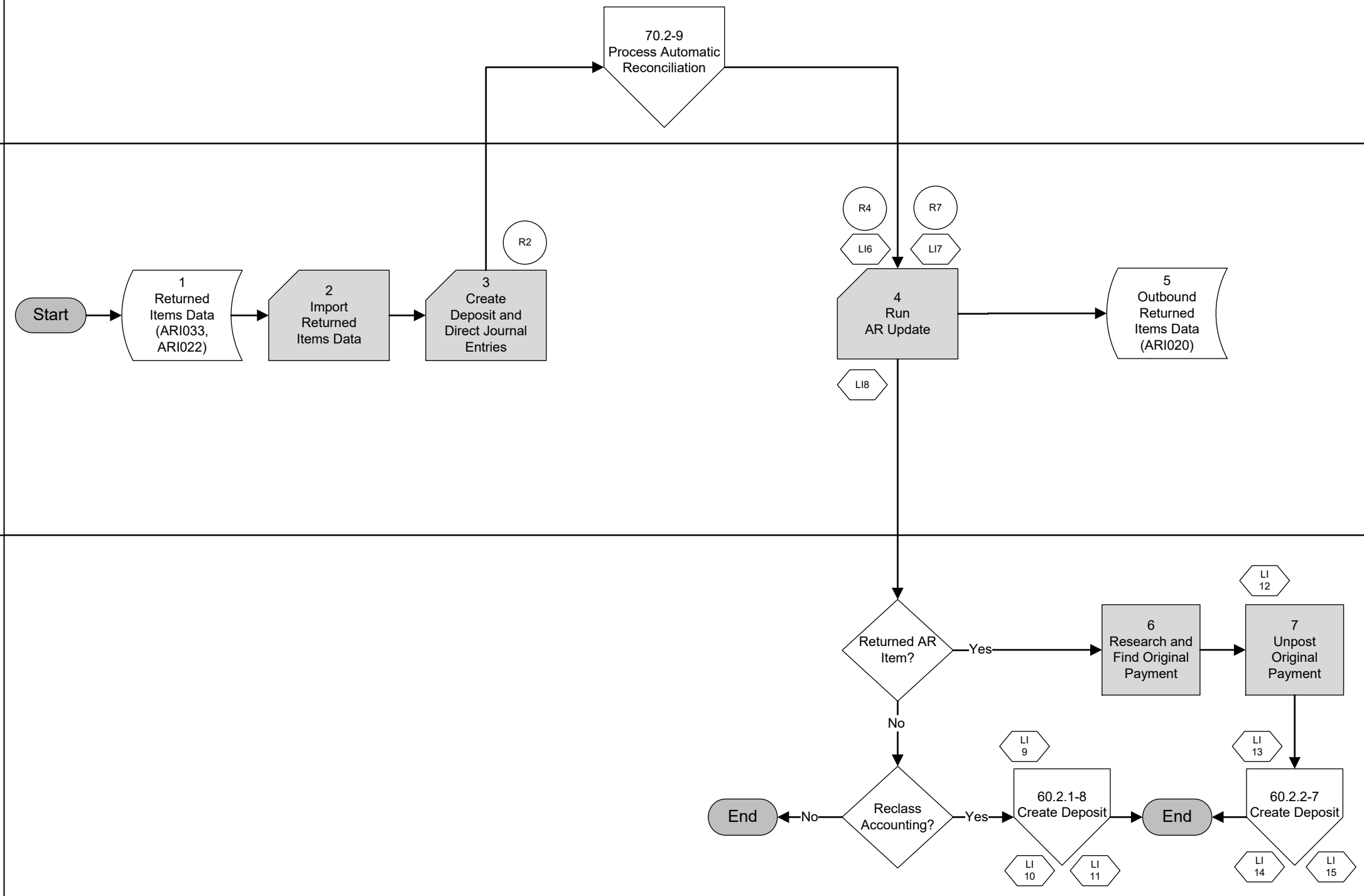


Accounts Receivable Module

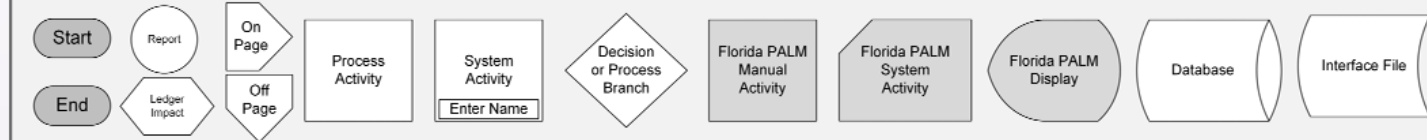
DFS CM Bank Reconciliation Processor

DFS AR Deposit Processor

Agency AR Item Processor

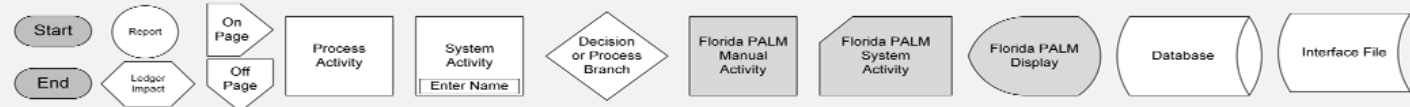


Shape Key



Accounts Receivable Module

This subprocess has been removed. The Offsets business process will be included in the Florida PALM Expansion Wave.



Accounts Receivable Module

