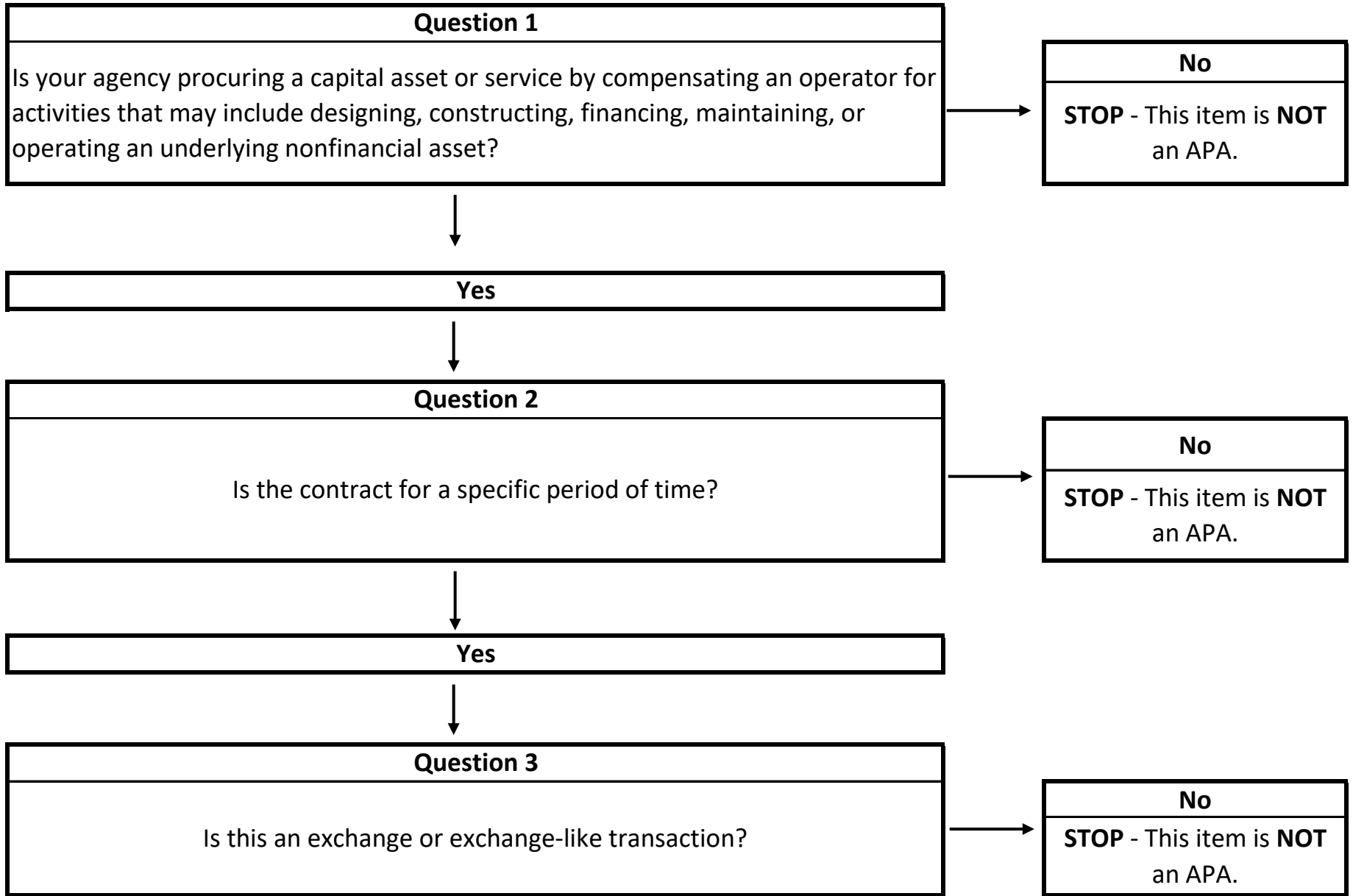


# Is this an APA?





**Yes**



**Question 4**  
Are payments by the government based entirely on the asset's availability for use rather than on tolls, fees, or similar revenues or other measures of demand?  
Availability for use may be based on specified criteria such as the physical condition of the asset, construction milestones, or the achievement of certain availability measures.



**No**  
**STOP** - This item is **NOT** an APA.



**Yes**  
This item is likely an APA.