



Prepared by BearingPoint, Inc.



IWG Technical Group Meeting



IWG Technical Workgroup Agenda

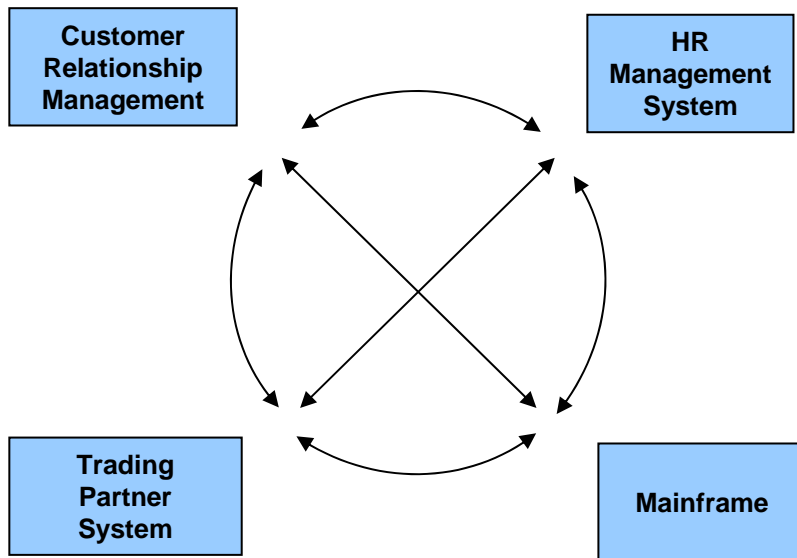
- **Introductions**
 - **Discussion of tools and techniques**
 - **The methods of integration and the technical skills required of agency staff**
 - **The role of the Aspire Technical Team and the agency teams in implementing various integration methods**
 - **Integration tools and infrastructure requirements**
 - **Discussion of screen-scraping technology**
 - **Why agencies are currently utilizing screen-scraping technology**
 - **How this technology is utilized and under what circumstances**
 - **Alternatives to utilizing screen-scraping technology for the input of transactions to Aspire**
 - **Q & A**
-



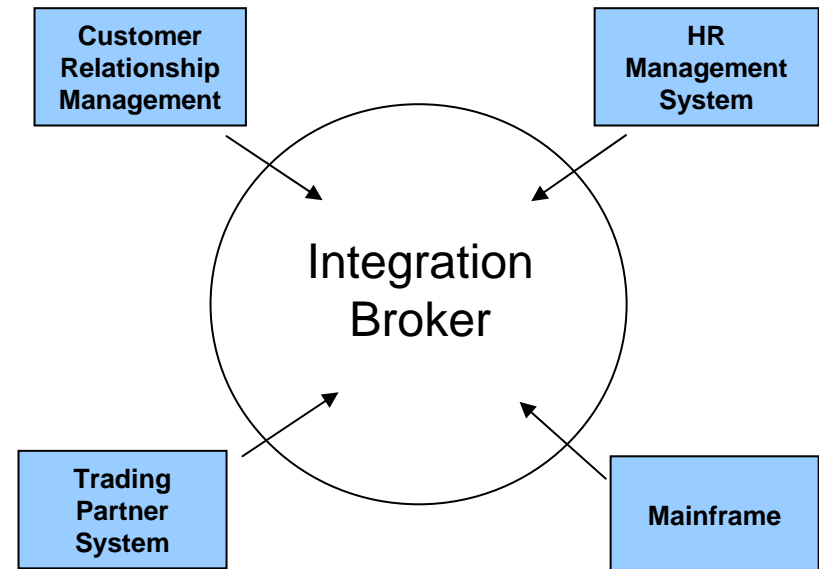
PeopleSoft Integration Tools

Integration Models

Point-to-Point

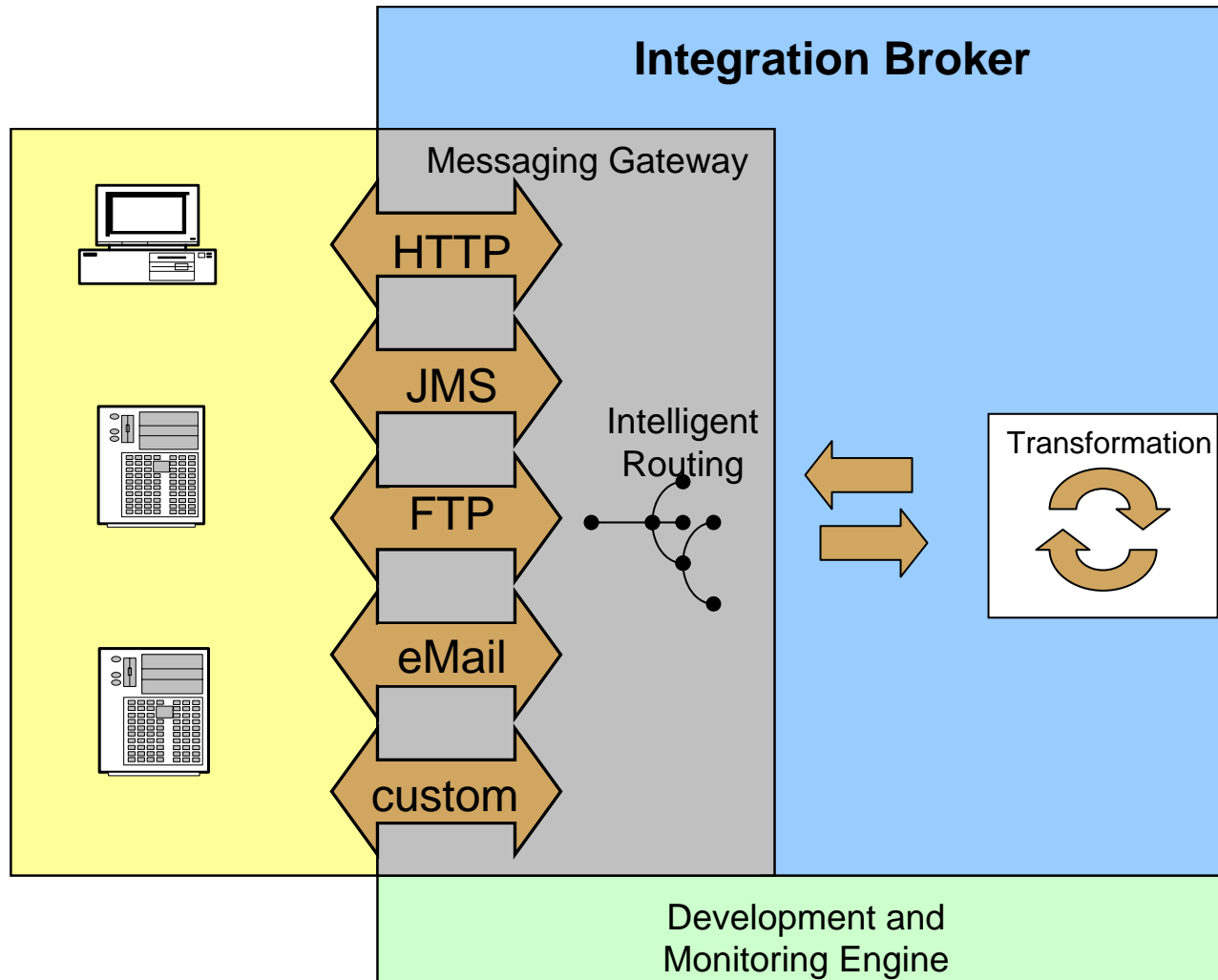


Hub and Spoke



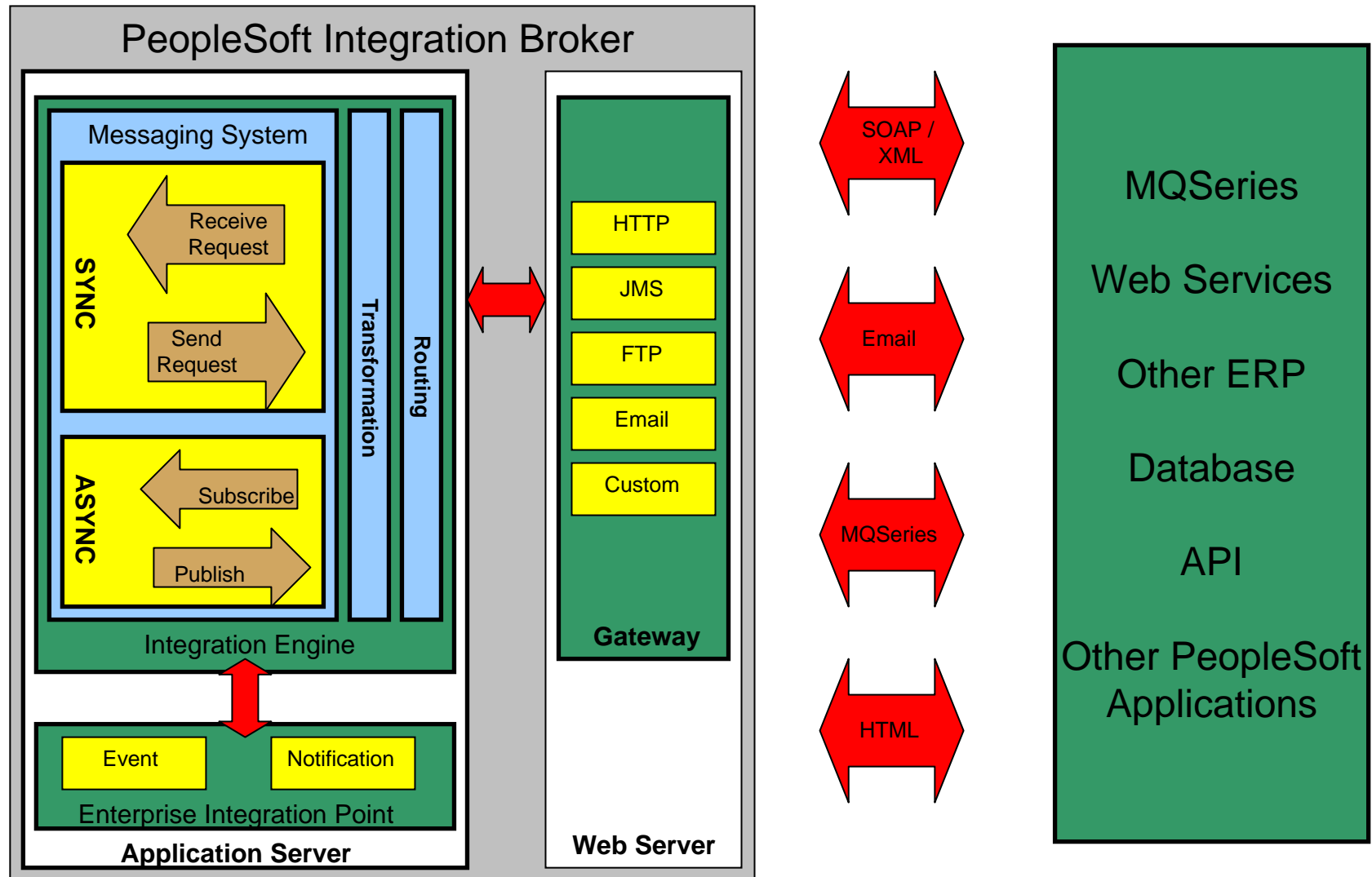


PeopleSoft Integration Broker





Integration Broker Architecture





Integration Services Overview

Application Messaging

- Message based interface architecture that facilitates interaction between systems and processes through use of web services
- Messaging architecture for both bi-directional synchronous and asynchronous into and out of Integration Broker
- Messages published in XML format and delivered to subscribing systems over secure HTTP connection
- Can be utilized to replicate and transmit PeopleSoft setup / configuration data with external systems

Component Interface

- Used to address API-based synchronous integration from third party applications to PeopleSoft applications
- External systems can invoke PeopleSoft Components and all associated business logic over Packaged Connectors (HTTP, JMS, FTP, Email) utilizing APIs (VB, Java, COM or C/C++)

File Interface

- Used to support integration with flat files
- File Interface supports Fixed Format Positional, CSV, or Tagged XML files
- File Layout Designer can graphically define file record layouts and can be invoked by PeopleSoft to create or read batch files



Integration Service Overview

Application Messaging

SKILLSETS REQUIRED

- XML expertise

INFRASTRUCTURE REQUIRED

- Web server capable of sending and receiving XML messages

Component Interface

SKILLSETS REQUIRED

- XML expertise
- Ability to create APIs which will create DLLs, classes and registry settings required to communicate with PS
 - Visual Basic
 - COM
 - C/C++
 - Java

INFRASTRUCTURE REQUIRED

- Web server capable of sending and receiving XML messages

File Interface

SKILLSETS REQUIRED

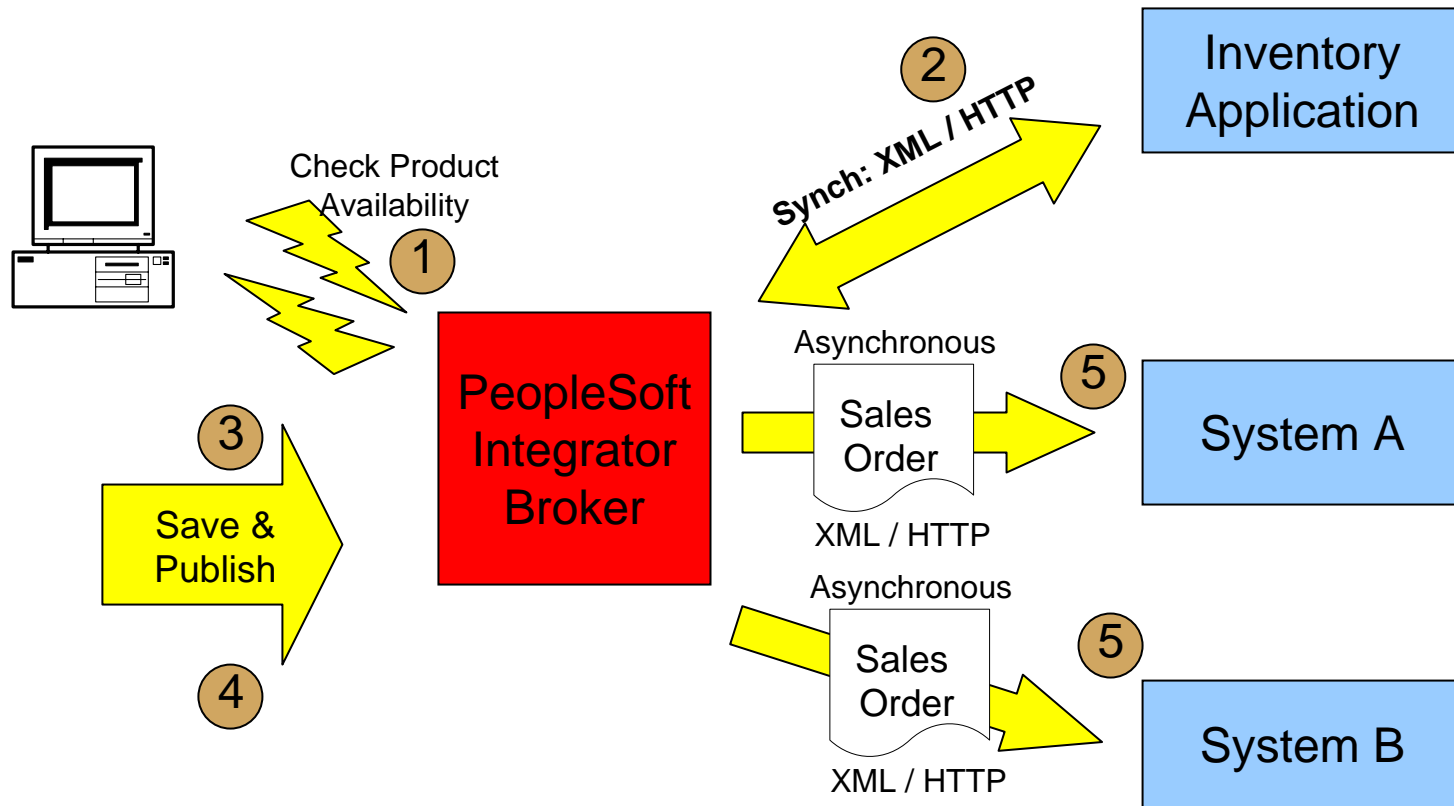
- Any technology which supports the creation of Fixed Format Positional, CSV, or Tagged XML files

INFRASTRUCTURE REQUIRED

- Servers capable of submitting and receiving flat files
 - FTP
 - Email

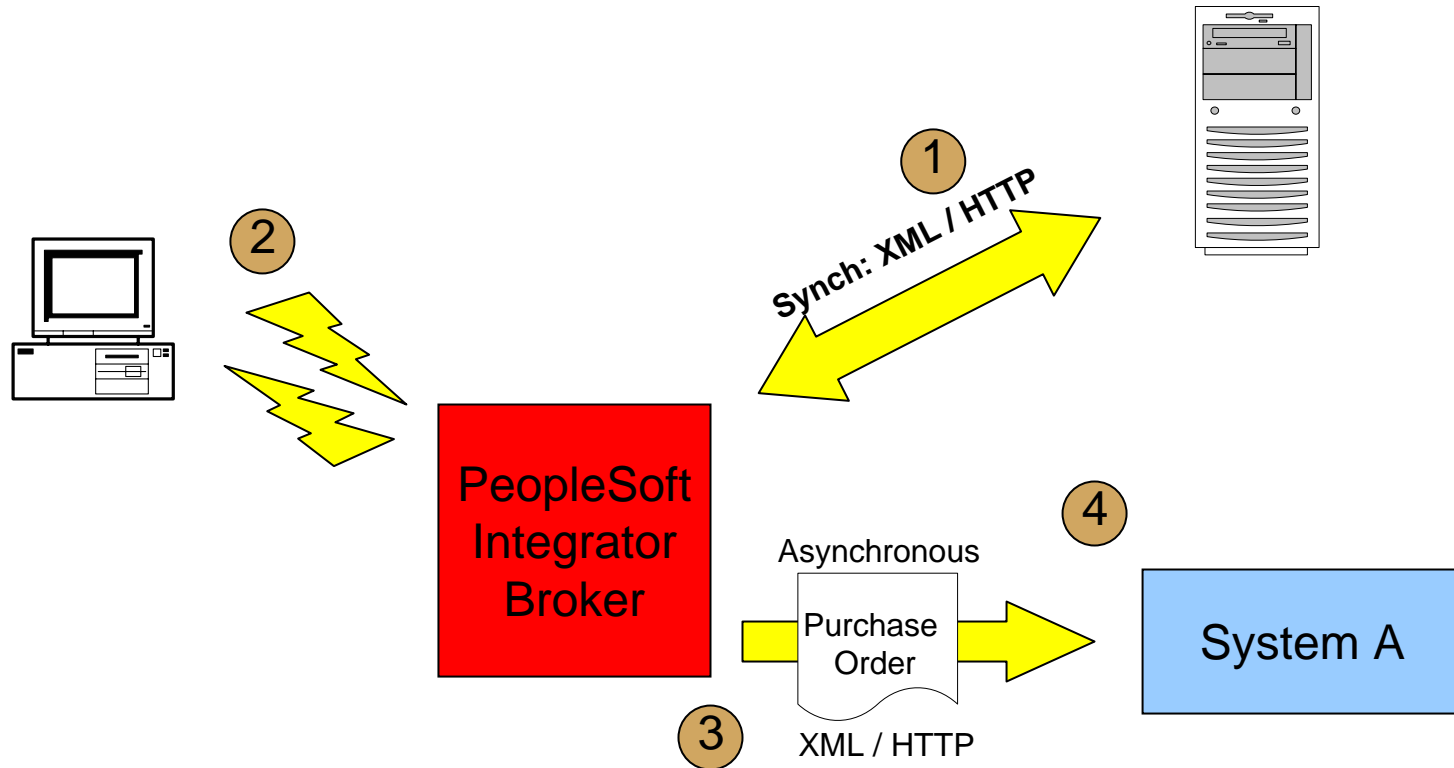


Application Messaging Example





Component / File Interface Example





PeopleSoft Integration Tools Summary

- **PeopleSoft Integration Broker can support Point-to-Point and Hub and Spoke Integration models**

- **PeopleSoft Integration Broker built upon PeopleSoft Internet Architecture**
 - Leverages PeopleSoft development toolsets
 - Maximizes web services technologies



PeopleSoft Integration Tools Summary

- **PeopleSoft Integration Broker capable of interacting synchronously or asynchronously utilizing various technologies and protocols**
 - Leverage existing systems expertise. Not necessary to re-tool staff in various integration technologies
 - Excel to CI: PS delivers a spreadsheet template containing visual basic code which allows you to attach a Component Interface and enter data into PeopleSoft
 - Returns success, warnings, errors to Excel
 - Record errors can be corrected and resubmitted
 - PeopleSoft currently supports Office 2000 or XP versions of Excel



PeopleSoft Integration Tools Summary

- **PeopleSoft Integration Broker is delivered with packaged connectors and GUI interface to simplify integration tasks**
 - Creating Message Definitions and Channels
 - Creating File Layouts
 - Creating APIs



Screen-Scraping Technology

- **Why agencies are currently utilizing screen-scraping technology**
- **How this technology is utilized and under what circumstances**
- **Alternatives to utilizing screen-scraping technology for the input of transactions to Aspire**



Q&A

