

3.0 Appendix B – Project Aspire Enhancement Functional Design

ADML ID	745A
ADML Description	Regular Deposit Entry Hyperlink to Direct Journal Component
ADML Tech#	745A

3.1 Background

3.1.1 Functional Requirement

Agencies are required to record deposits into the Aspire Accounts Receivable that are reconciled to the bank statement by the Treasury Department. Deposits must include the revenue accounting information, cash accounting information, etc.

3.1.2 Delivered Functionality

Deposits are entered on the Regular Deposit Entry component in Aspire. The Deposit control count and control amount are entered and balanced to the total of the number of payments entered and the sum of the payment amounts, respectively. The user must navigate to a second component to enter the revenue accounting information using PeopleSoft drop down menu's.

3.1.3 Gap Description

Functionality to navigate to the second component from a hyperlink is desired to streamline the process of entering the revenue accounting information.

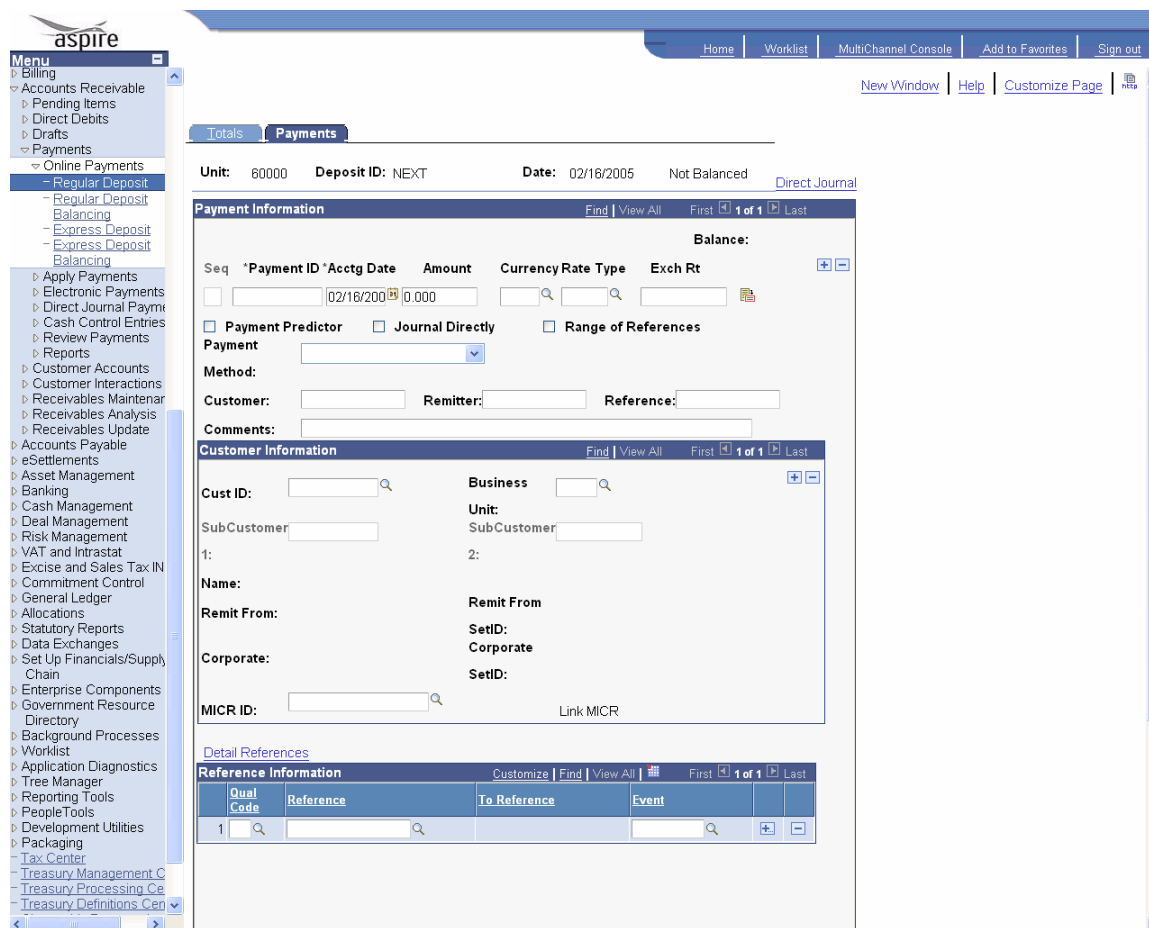
3.2 Description of New Functionality

A hyperlink on the Payment Page, when selected, will navigate the user to the Create Accounting Entries page for a Direct Journal deposit.

The hyperlink should be inactive until the deposit status is in a ‘Balanced’ state. A deposit will be in a balanced state when the user tabs from the payment amount of the last payment and the balance status is changed from ‘Not Balanced’ to ‘Balanced.’ If the user tabs from the payment amount and the balance status is changed from ‘Balanced’ to ‘Not Balanced’ the hyperlink should be inactivated.

A forced save should occur on the Regular Deposit Entry page when the hyperlink is selected.

The following is the Regular Deposit Entry Payment Page with the Hyperlink:



Selecting the 'Direct Journal' hyperlink should navigate to the page below:

Navigation:

- >Accounts Receivable
- >Payments
- >Direct Journal Payments
- >Create Accounting Entries

3.3 Navigation path

Navigation:

- >Accounts Receivable
- >Payments
- >Online Payments
- >Regular Deposit

3.4 Set Up/Control Data

None

3.5 Application Changes (e.g., Pages, Components, Menus, Records, App Engines, SQRs, etc.)

The following modification will be necessary to fulfill the business requirement.

- Create a hyperlink on the PAYMENT_DATA2 page to navigate to the NONCUST_PAYMENTS component.
- Add peoplecode to activate the hyperlink if the deposit status is Balanced. Add peoplecode to inactivate hyperlink if the deposit status is Not Balanced.

3.6 Unit Test Considerations

The following are the Unit Test Considerations:

- After entering all payments for a deposit and the deposit status is 'Balanced' the hyperlink should be activated.
 - Result: Hyperlink navigates to the Direct Journal Create Accounting Entry component.
- change a payment after entering all payments to cause the deposit status to change from 'Balanced' to 'Not Balanced'
 - Result: Hyperlink is inactivated.

3.7 Miscellaneous

N/A

3.8 Assumptions

The enhancement is technically doable.