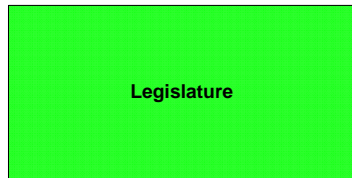


State of Florida

Governance

Recommended Governance Structure

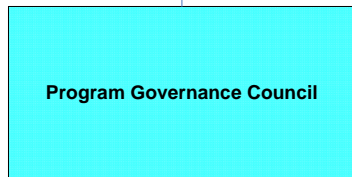
Recommended Governance Structure



Legislature makes key decision about investments in ERP programs and provides oversight on those investments



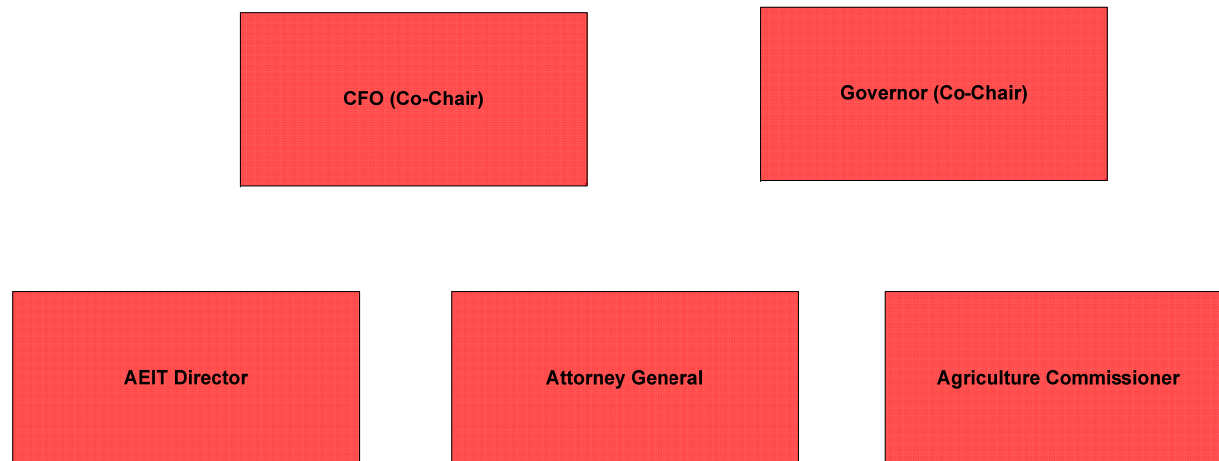
Strategic Enterprise Business Policy Council establishes a Strategic Enterprise Business plan and makes recommendations on investments in ERP programs to support the plan. The council also provides oversight on new programs to ensure they are meeting the requirements in the State's strategic business plan and reviews/make major milestone decisions for ERP programs.



Program Governance makes recommendations on requirements for the Strategic Enterprise Business plan. Manages the State's business process improvements and sets standards for data management, training, enterprise architecture, enterprise application integration, security, and quality assurance and testing controls.

Recommended Strategic Enterprise Business Policy Council Structure

Strategic Enterprise Business Policy Council establishes a Strategic Enterprise Business plan and makes recommendations on investments in ERP programs to support the plan. The council also provides oversight on new programs to ensure they are meeting the requirements in the State's strategic business plan and reviews/make major milestone decisions for ERP programs.



Recommended Program Governance Council Structure

Program Governance makes recommendations on requirements for the Strategic Enterprise Business plan. Manages the State's business process improvements and sets standards for data management, training, enterprise architecture, enterprise application integration, security, and quality assurance and testing controls.

