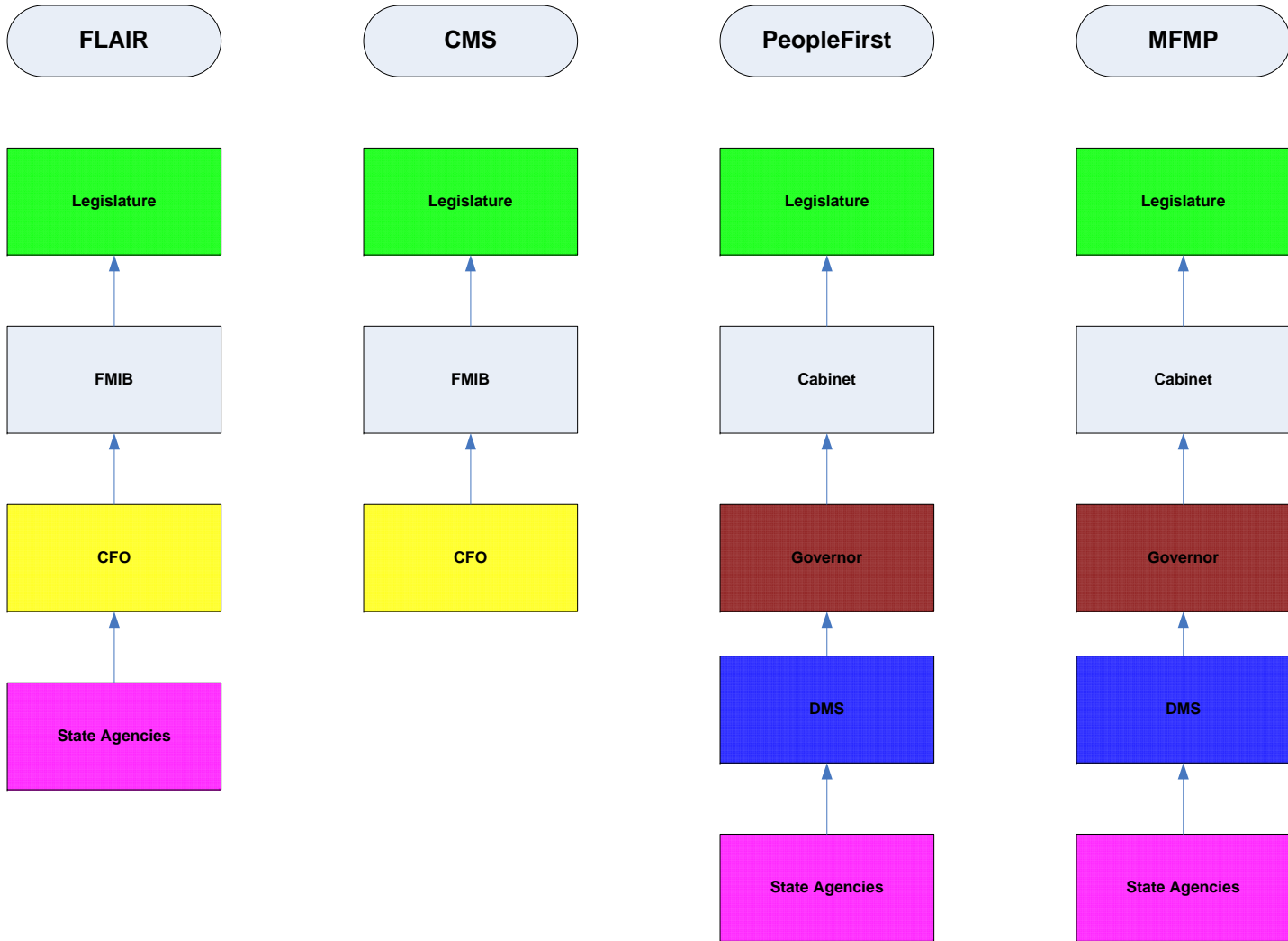


# State of Florida

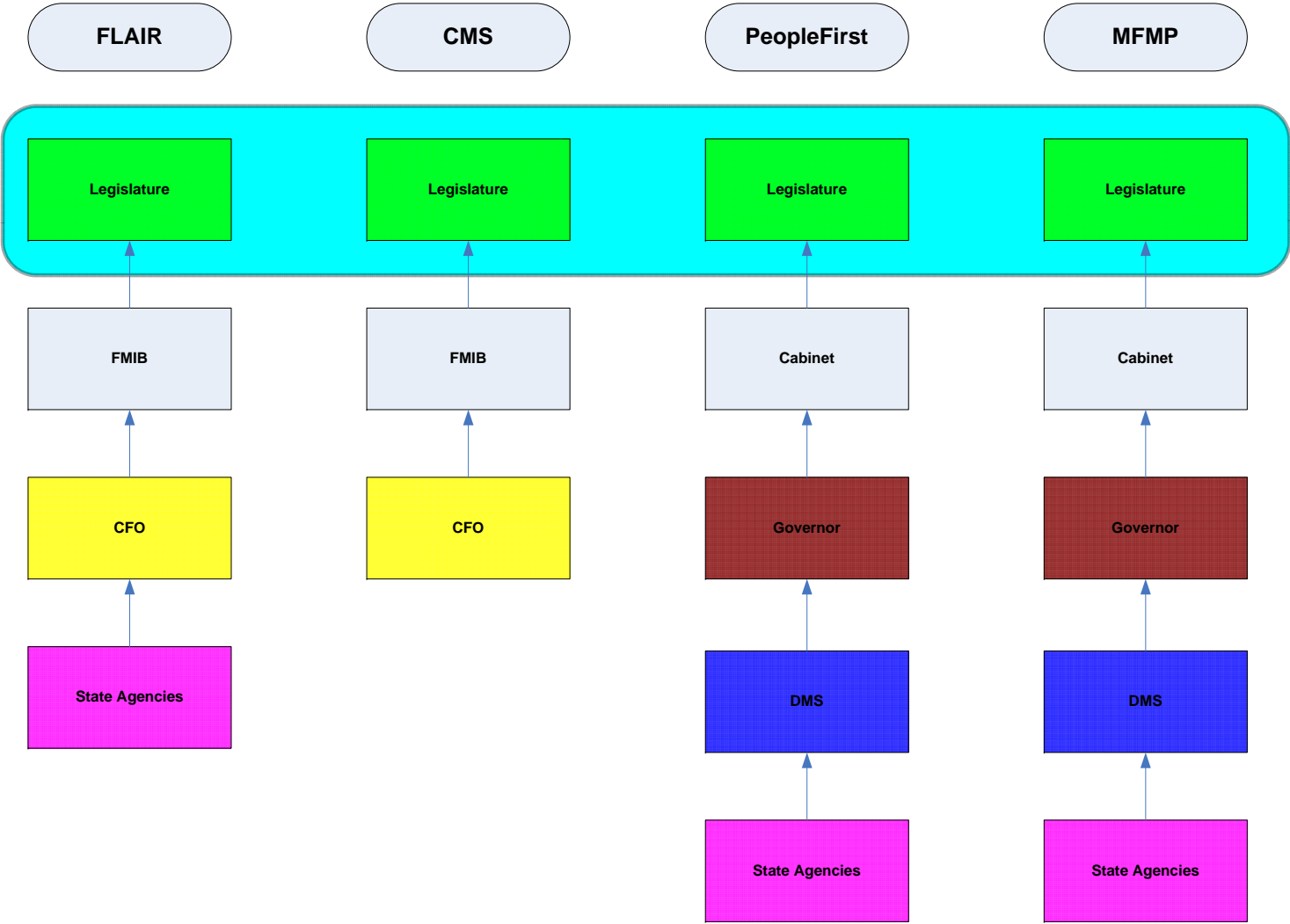
## Governance

# Current Governance Structure

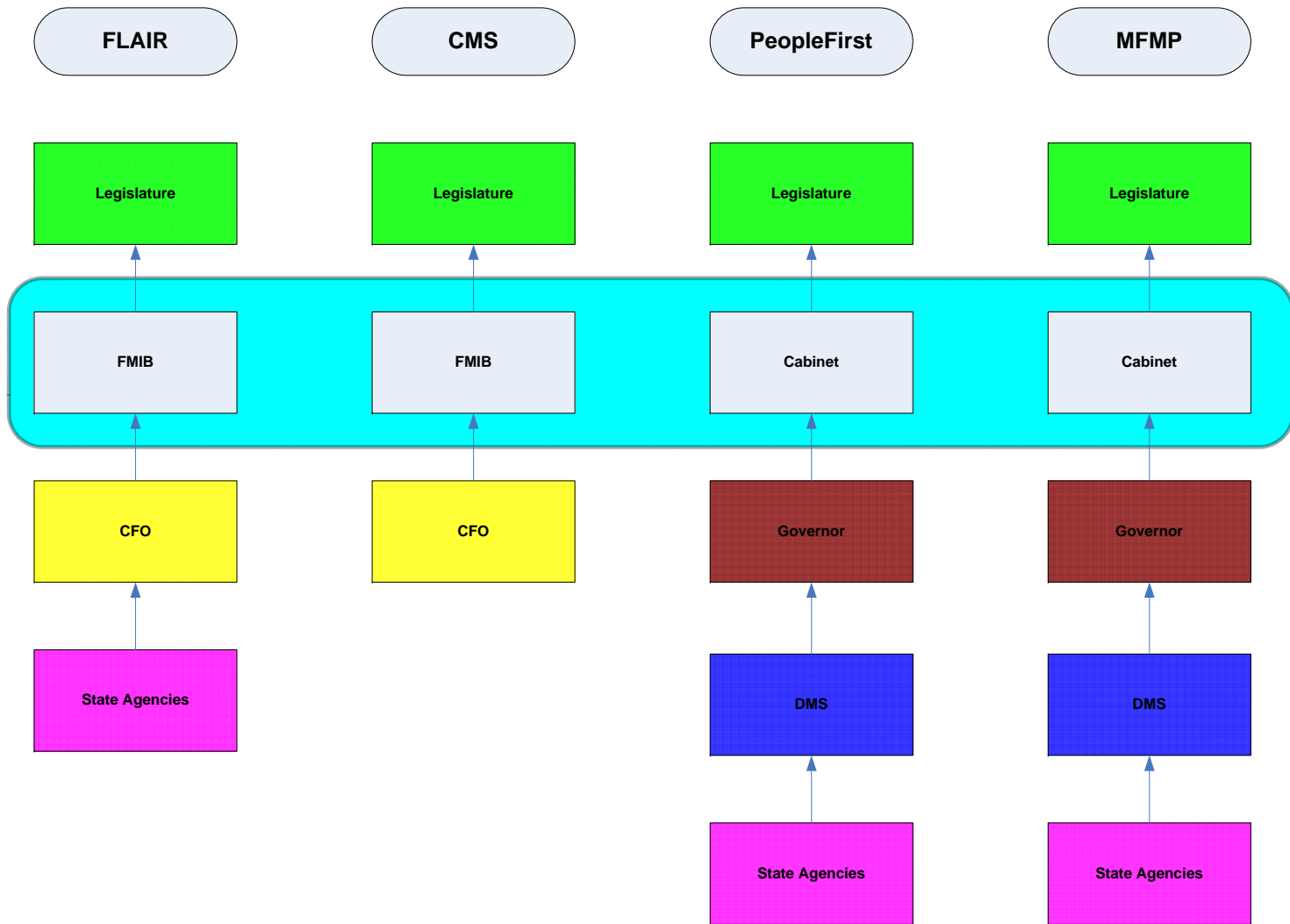
# Current Governance Structure



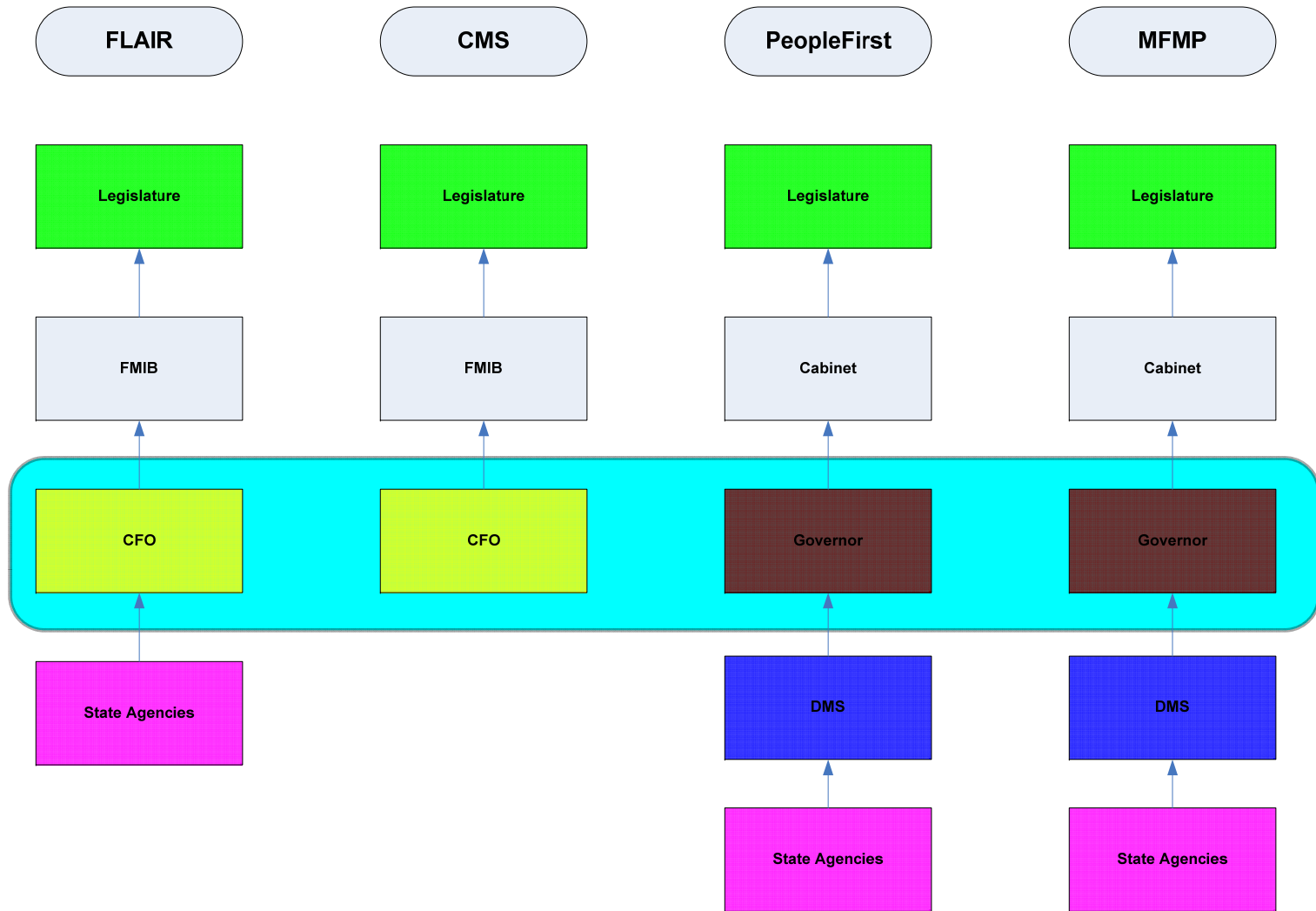
# Policy Level Governance



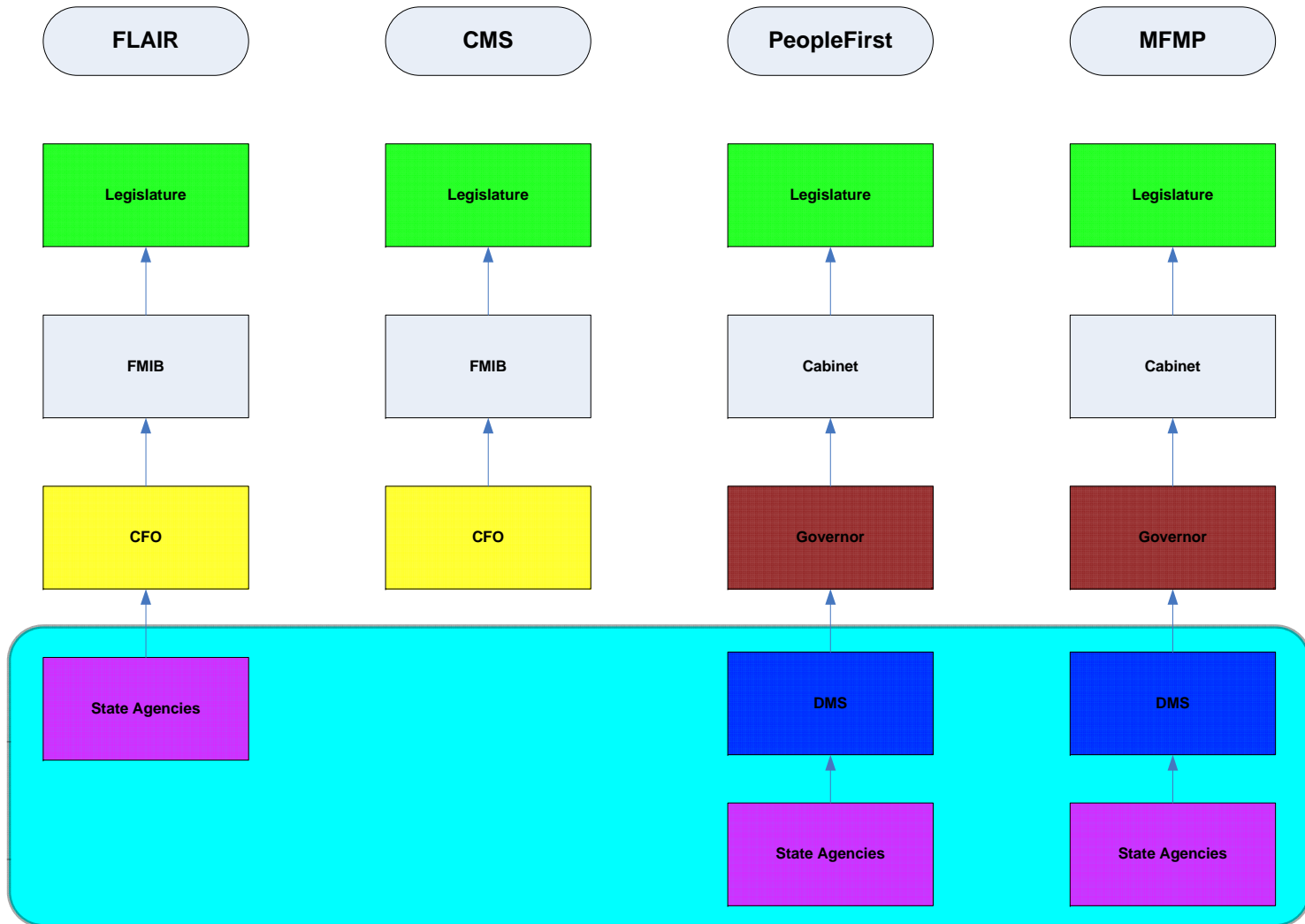
# Strategic Enterprise Business Governance Level



# Business Owner Governance Level

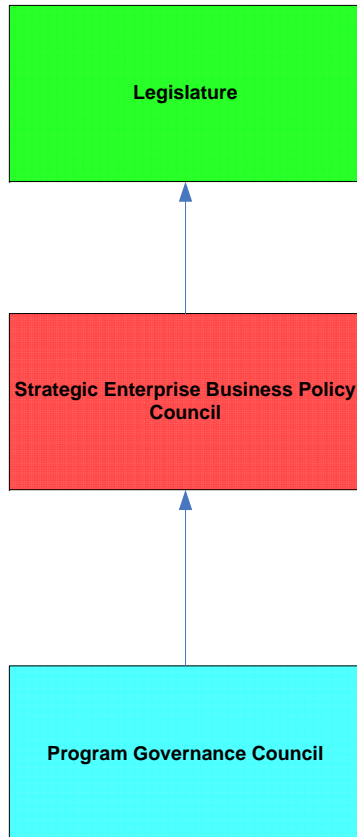


# User Level Governance



# Recommended Governance

# Recommended Governance Structure



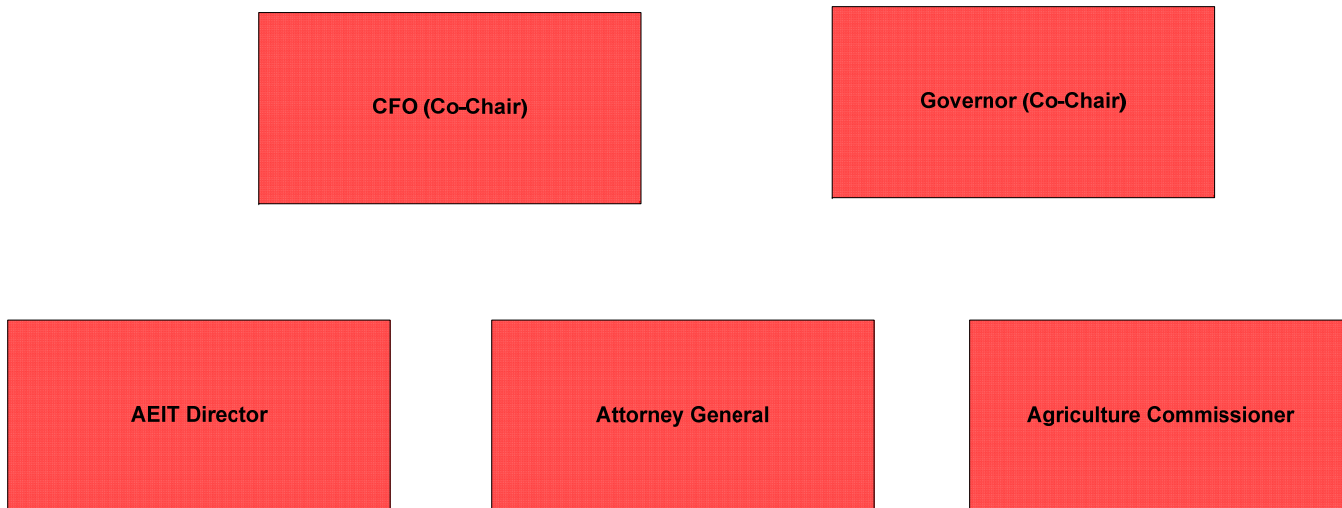
Legislature makes key decision about investments in ERP programs and provides oversight on those investments

Strategic Enterprise Business Policy Council establishes a Strategic Enterprise Business plan and makes recommendations on investments in ERP programs to support the plan. The council also provides oversight on new programs to ensure they are meeting the requirements in the State's strategic business plan and reviews/make major milestone decisions for ERP programs.

Program Governance makes recommendations on requirements for the Strategic Enterprise Business plan. Manages the State's business process improvements and sets standards for data management, training, enterprise architecture, enterprise application integration, security, and quality assurance and testing controls.

## **Recommended Strategic Enterprise Business Policy Council Structure**

Strategic Enterprise Business Policy Council establishes a Strategic Enterprise Business plan and makes recommendations on investments in ERP programs to support the plan. The council also provides oversight on new programs to ensure they are meeting the requirements in the State's strategic business plan and reviews/make major milestone decisions for ERP programs.



# Recommended Program Governance Council Structure

Program Governance makes recommendations on requirements for the Strategic Enterprise Business plan. Manages the State's business process improvements and sets standards for data management, training, enterprise architecture, enterprise application integration, security, and quality assurance and testing controls.

